

Challenging Case Competition with Experts' Focus Review I

A career achievement: transradial, CTO, LM ...

Y.Louvard, ICPS, Massy, Quincy,
Générale de santé-Ramsay,
France

TCTAP 2018, Seoul, Korea

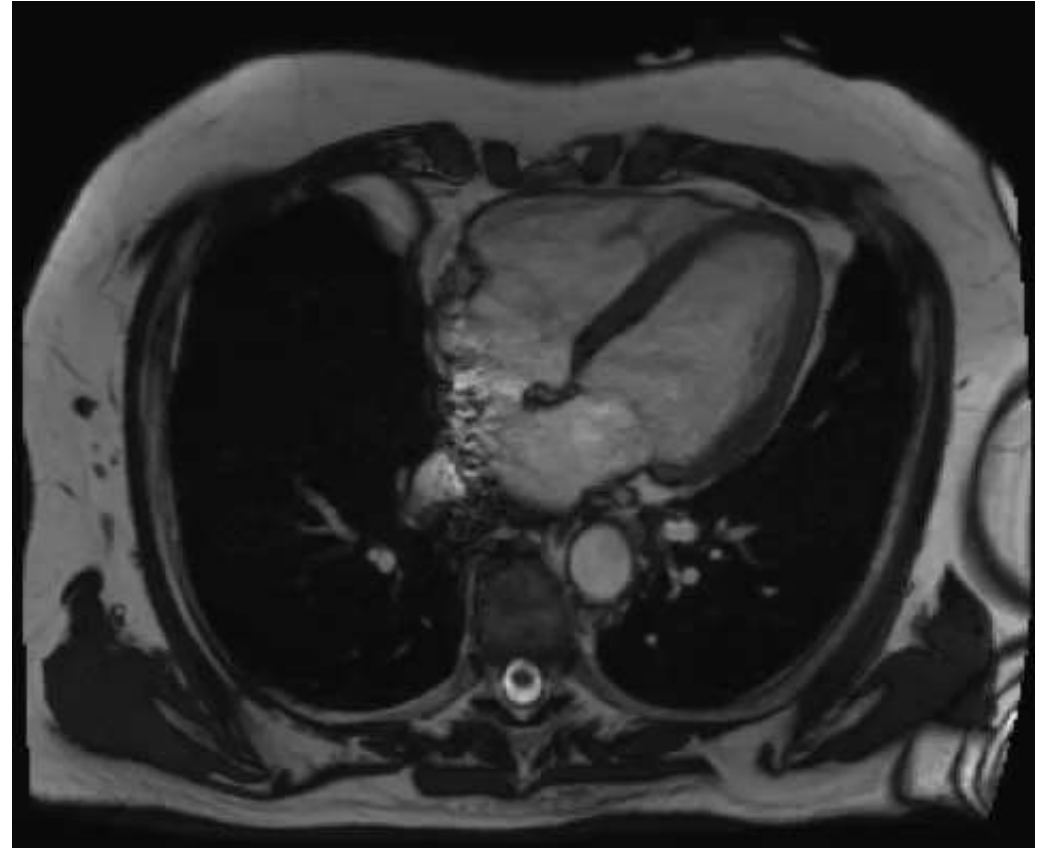
Clinical data

- Male, 77 yo
- HTN, dyslipidemia

- 79 kg, 178 cm
- Creatinine clearance: 80ml/mn

- Stable angina
- Stress MRI (dipyridamole): ischemia 6/17 segments anterior wall, no MI, LVEF: 64%

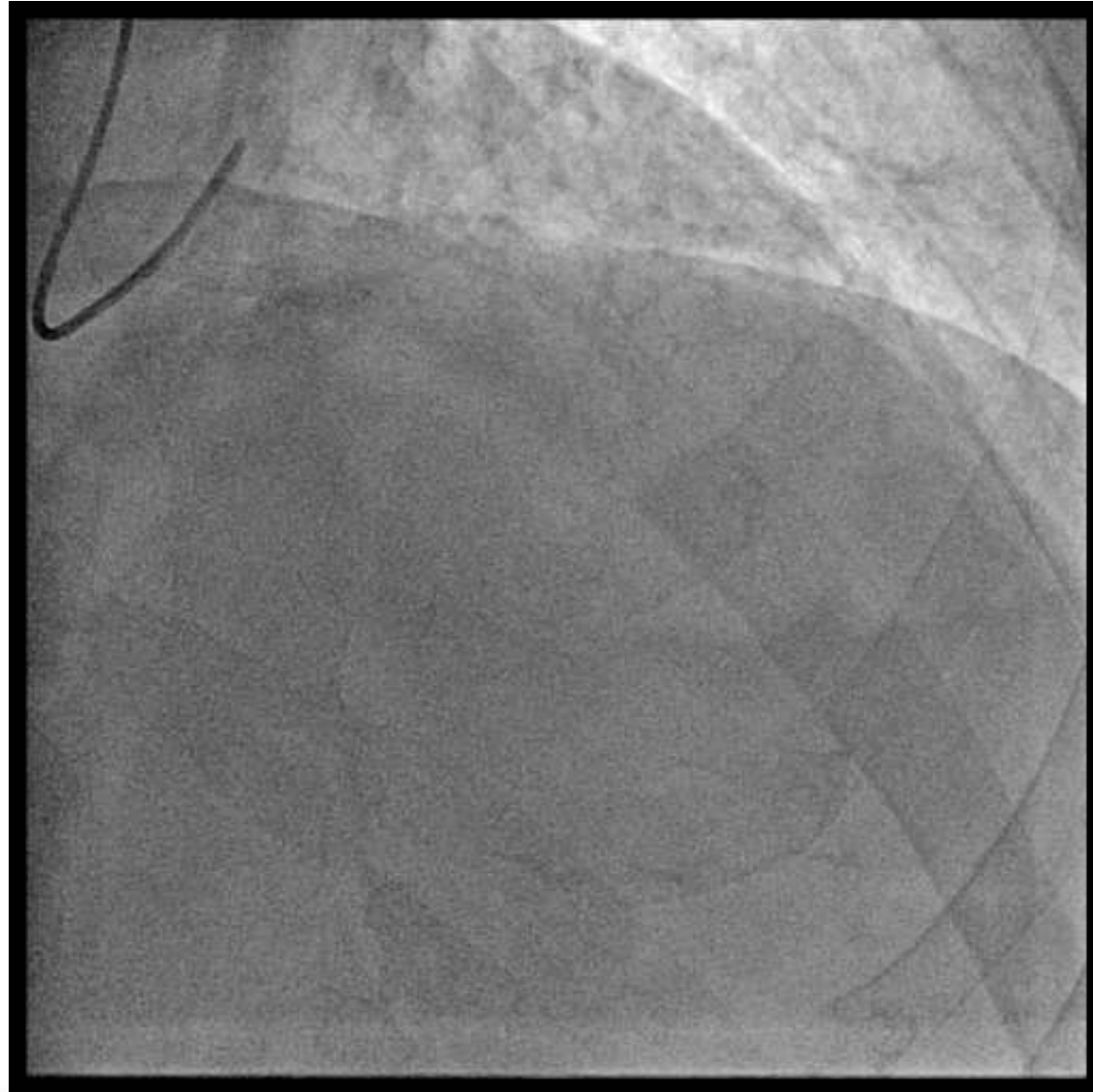
Anterior wall viability



LCA coronary angiography



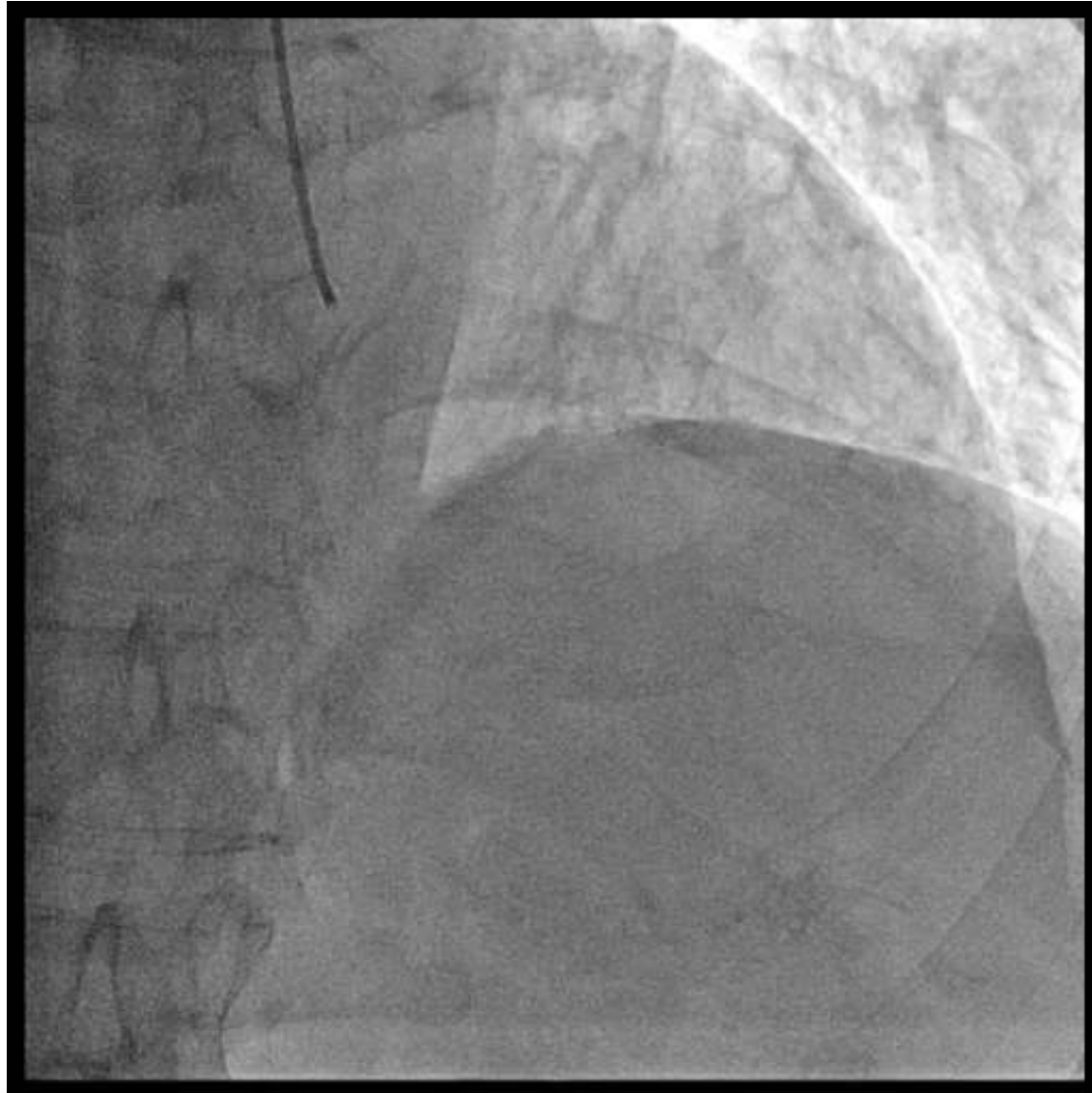
LCA coronary angiography



LCA coronary angiography



RCA coronary angiography



Global strategy

- CABG vs PCI:

- SYNTAX I: 31.5

- SYNTAX II:

- PCI**

- SYNTAX score II: 30.6

- PCI 4 year mortality: **7.1 %**

- CABG**

- SYNTAX score II: 38.4

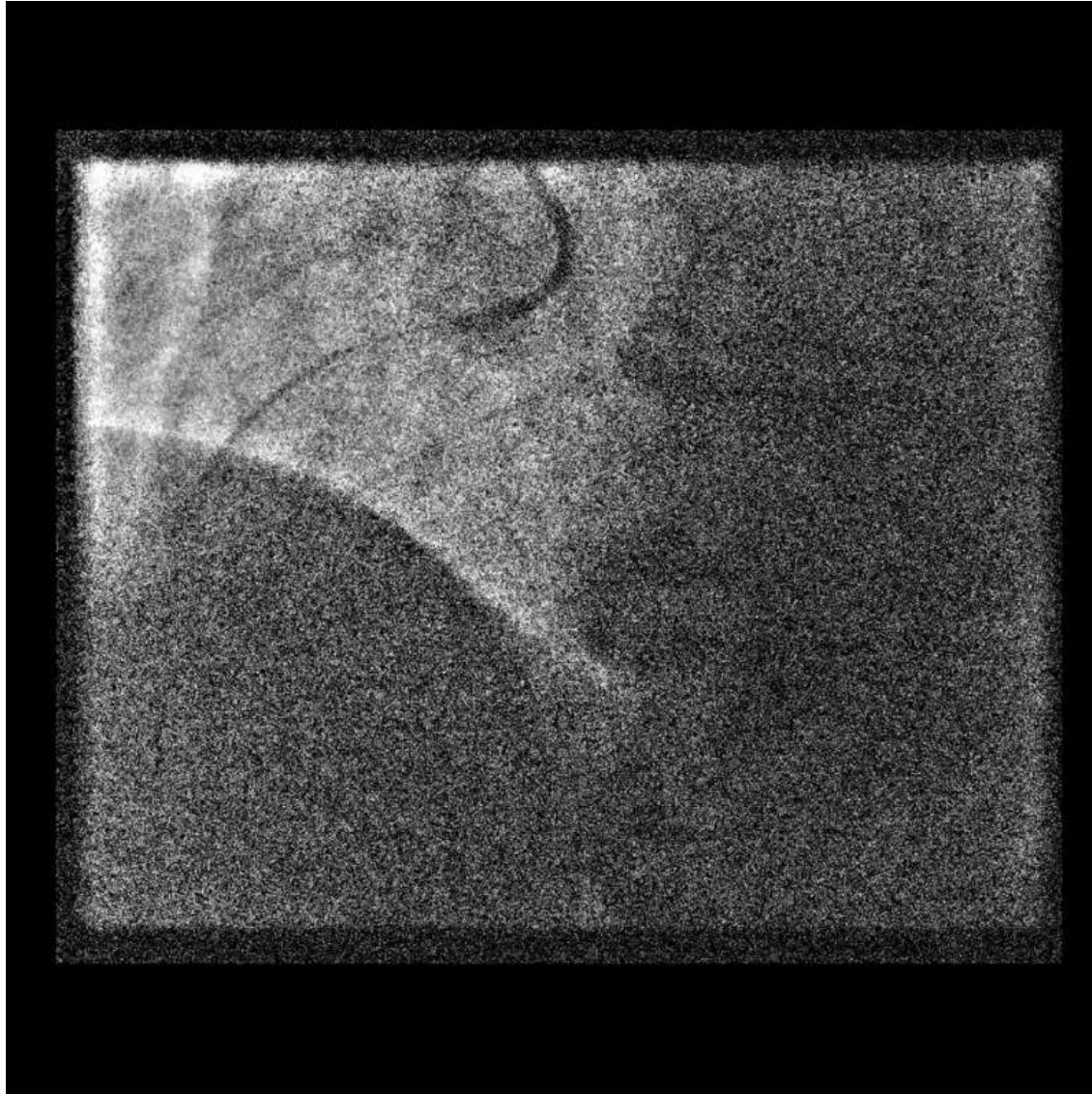
- CABG 4 year mortality: 13.3 %

- Staging or not?: staging (preserve contrast medium for CTO PCI), RCA first
- Double radial approach (nearly exclusive in Massy)
- 7F for the LCA (need IVUS guidance ?)

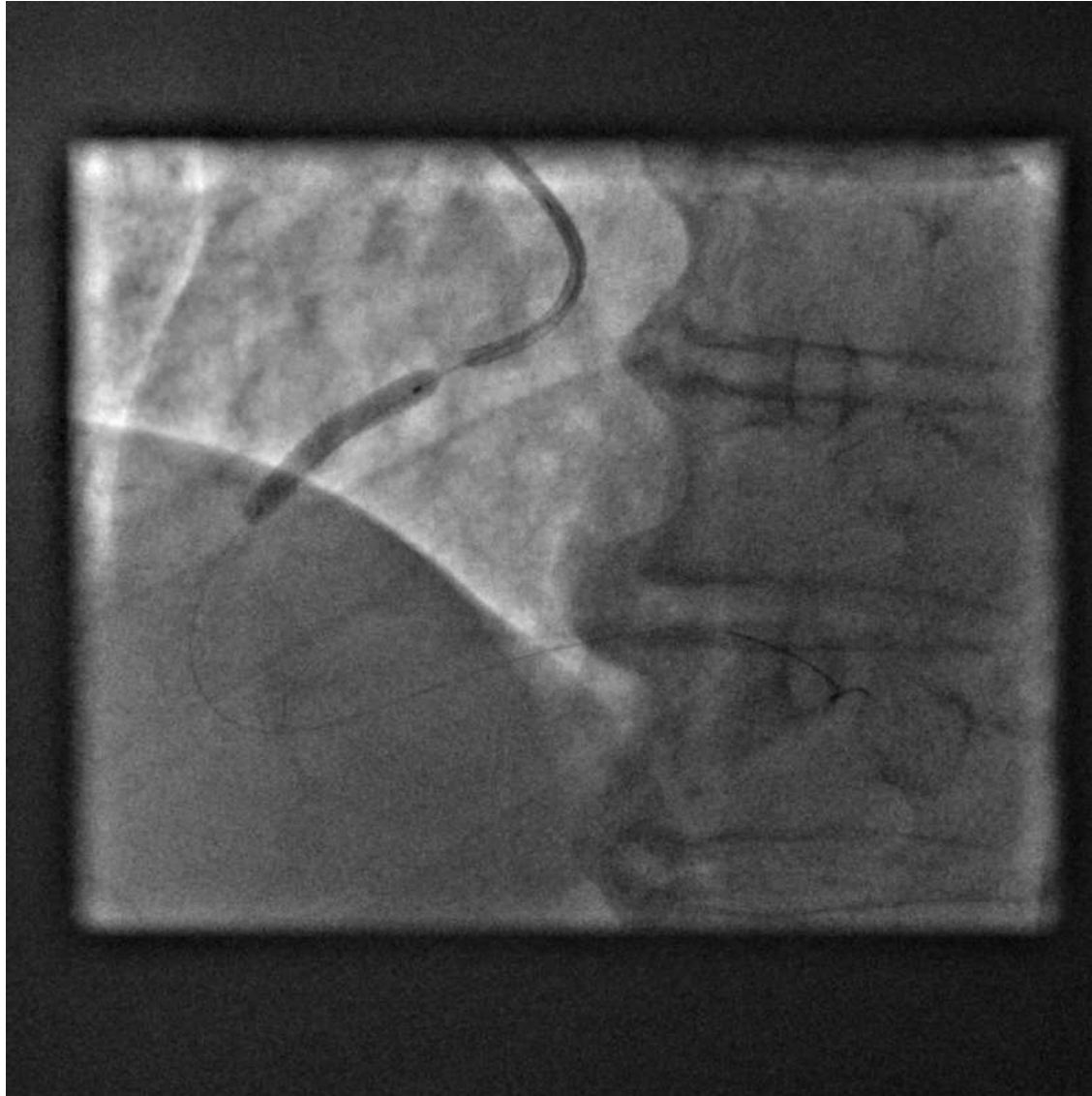
RCA PCI



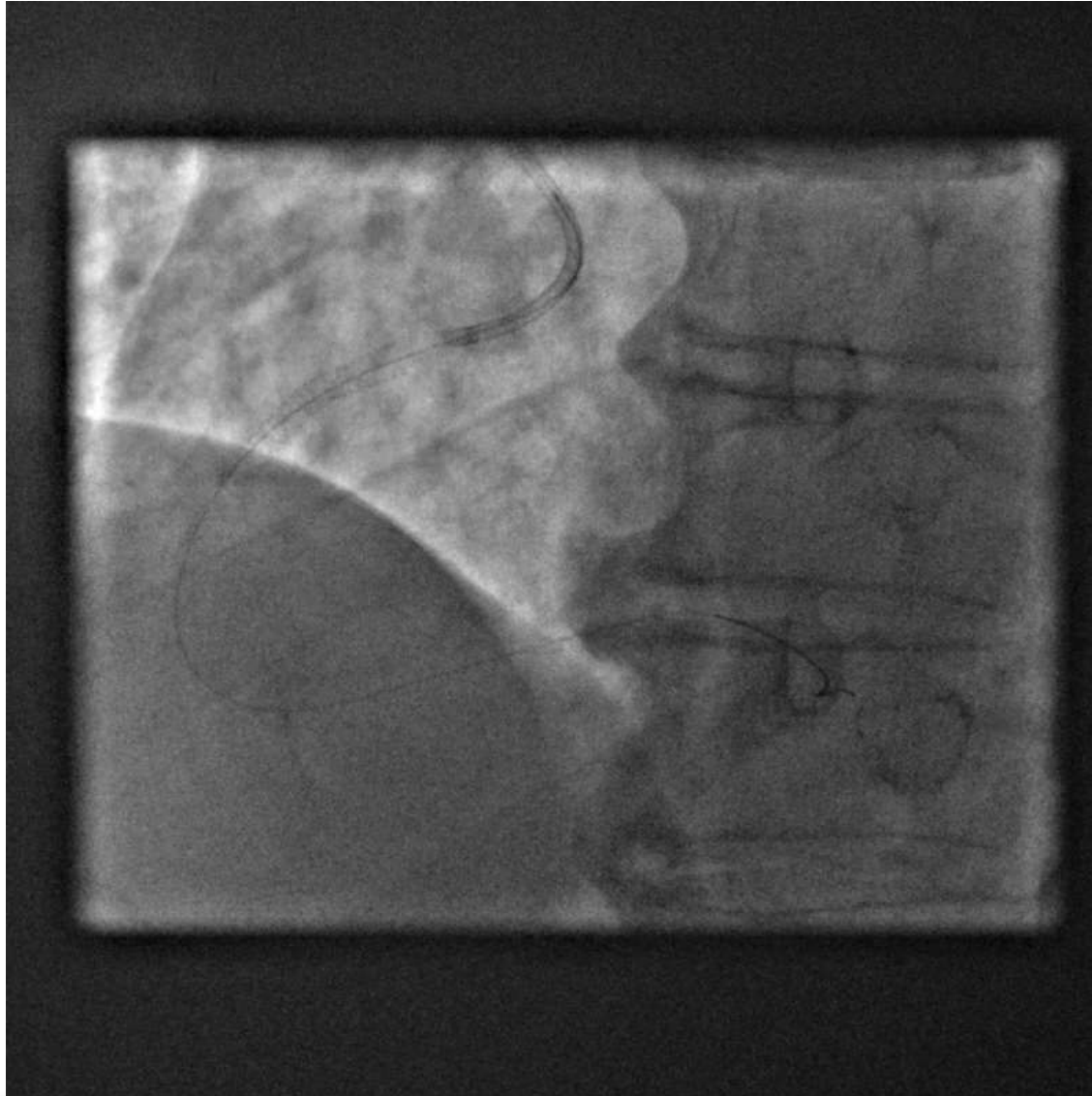
Resolute Onyx 3.5X22



Resolute Onyx 3.5X22



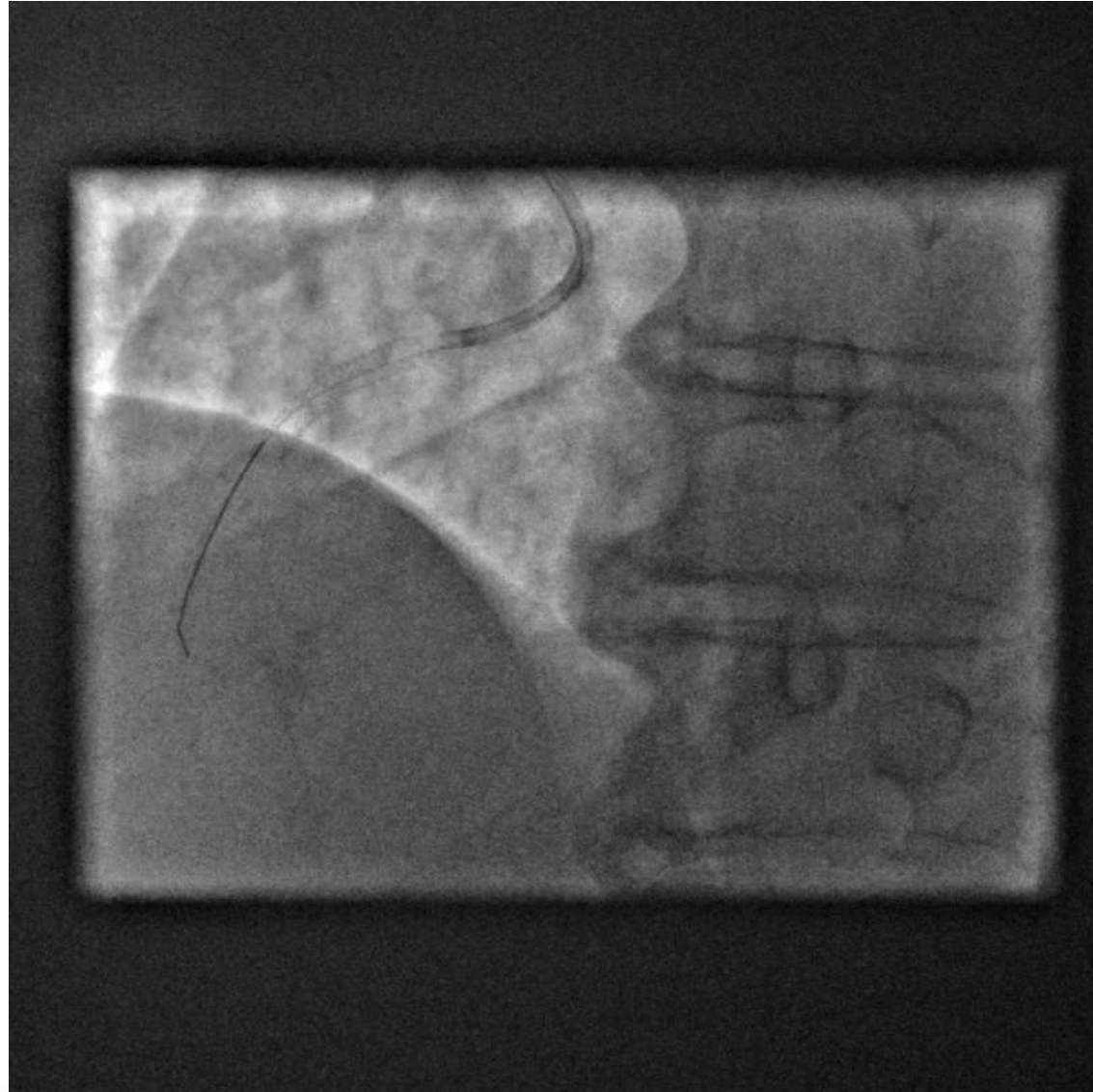
Resolute Onyx 3.5X22



Balloon 4.0 nc



RCA PCI result



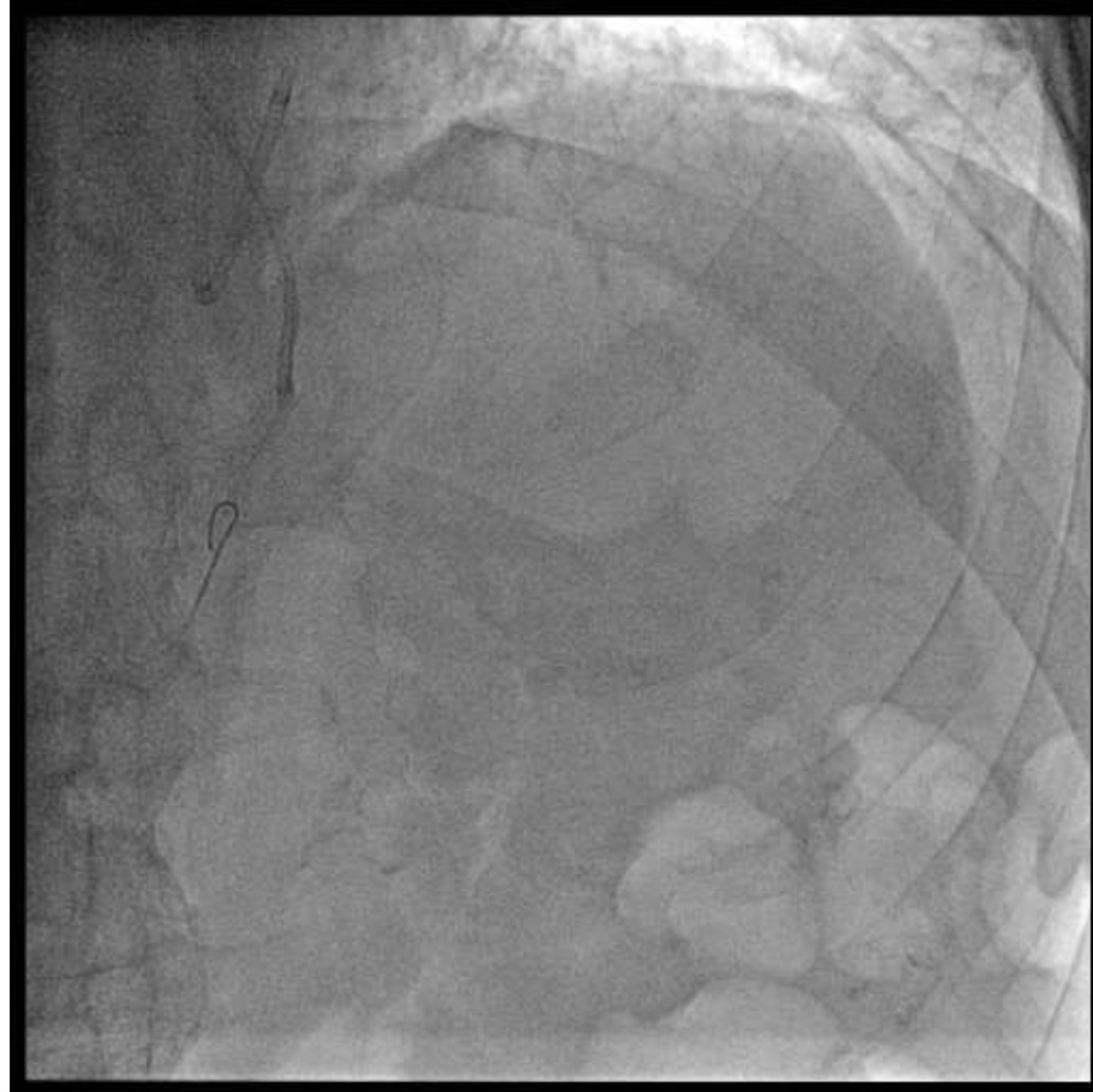
CTO PCI

- Calcified
- Blunt occlusion
- < 20 mm

J-CTO score: 2

LAD CTO and LM PCI

Double injection



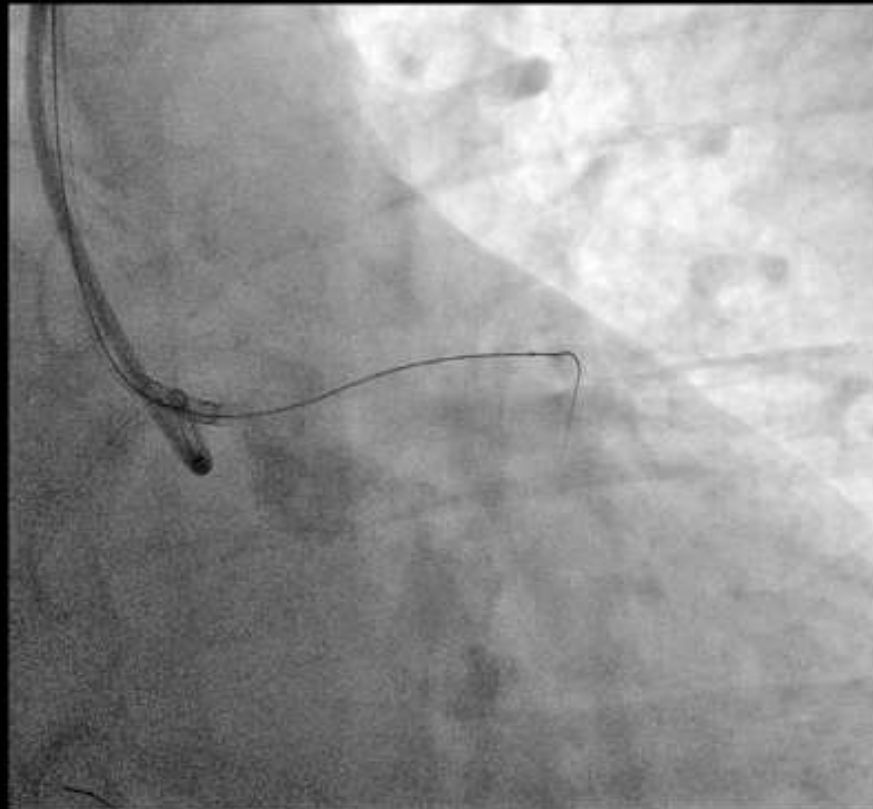
J-CTO: 2

EBU 3.5 7F in LM, AL1 6F in RCA

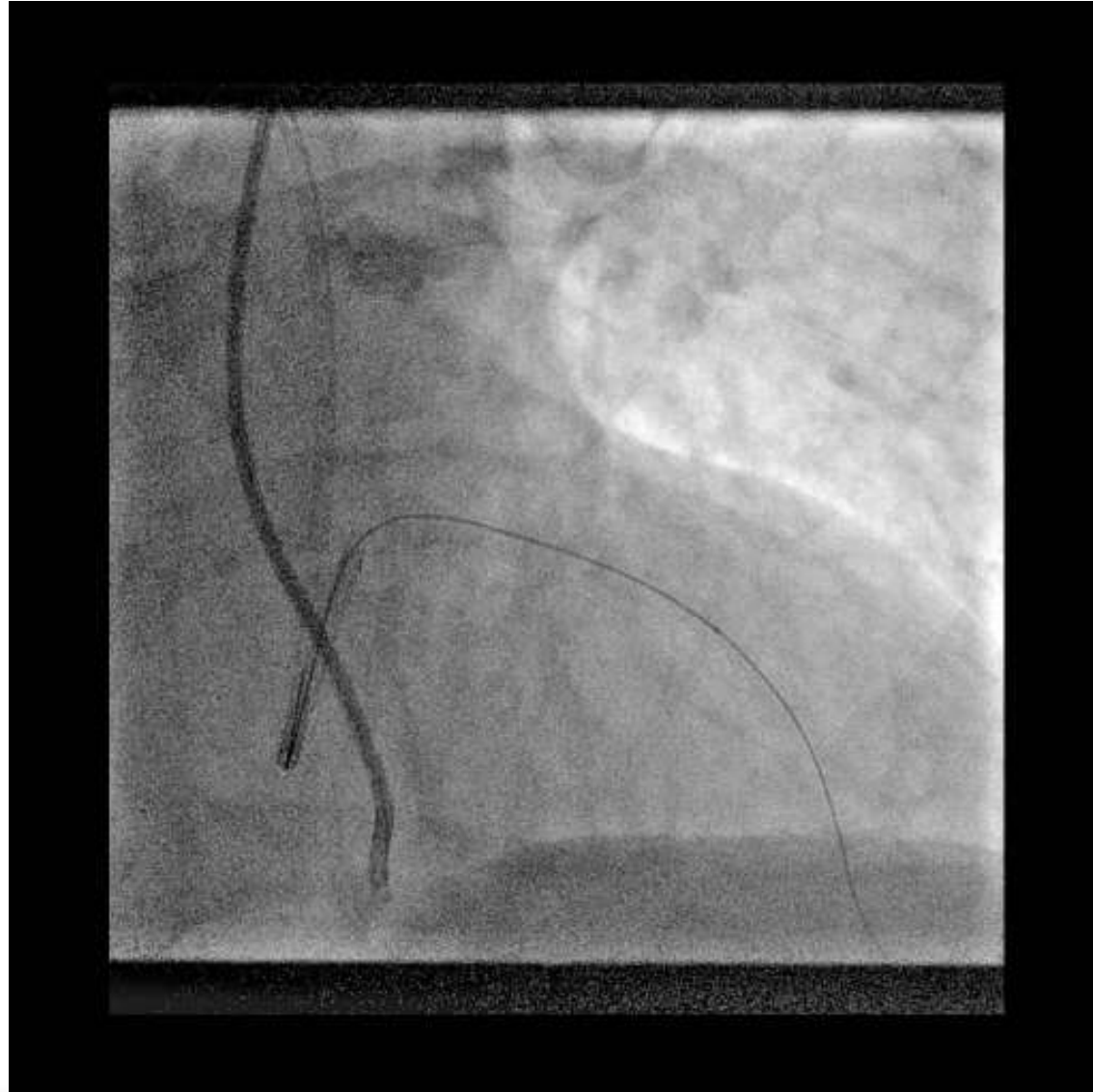
**Selective injection close
to CTO: Finecross**



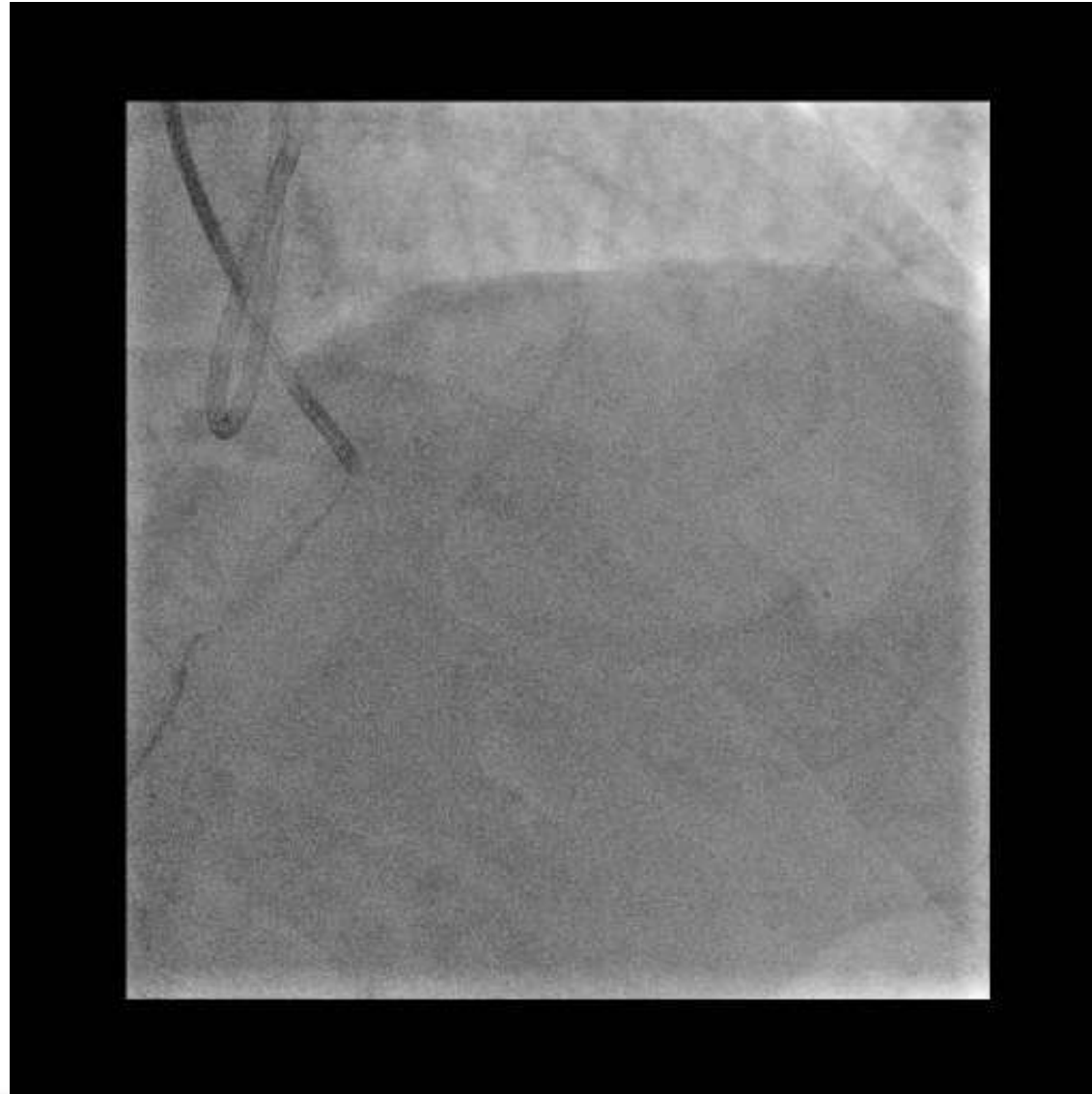
Fielder XT



Gaia 1st



Finecross

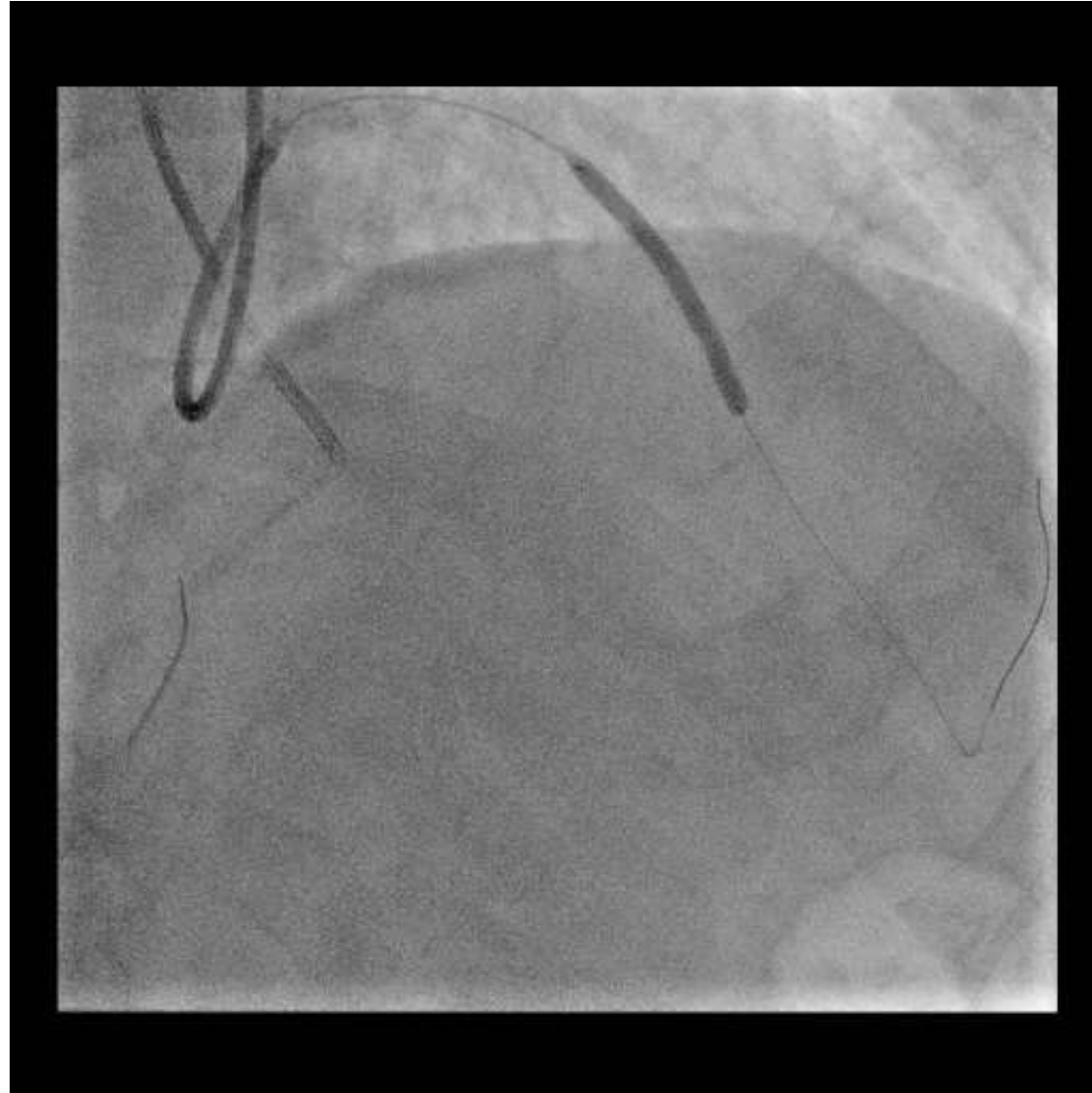


**BMW
Trek 2X20**

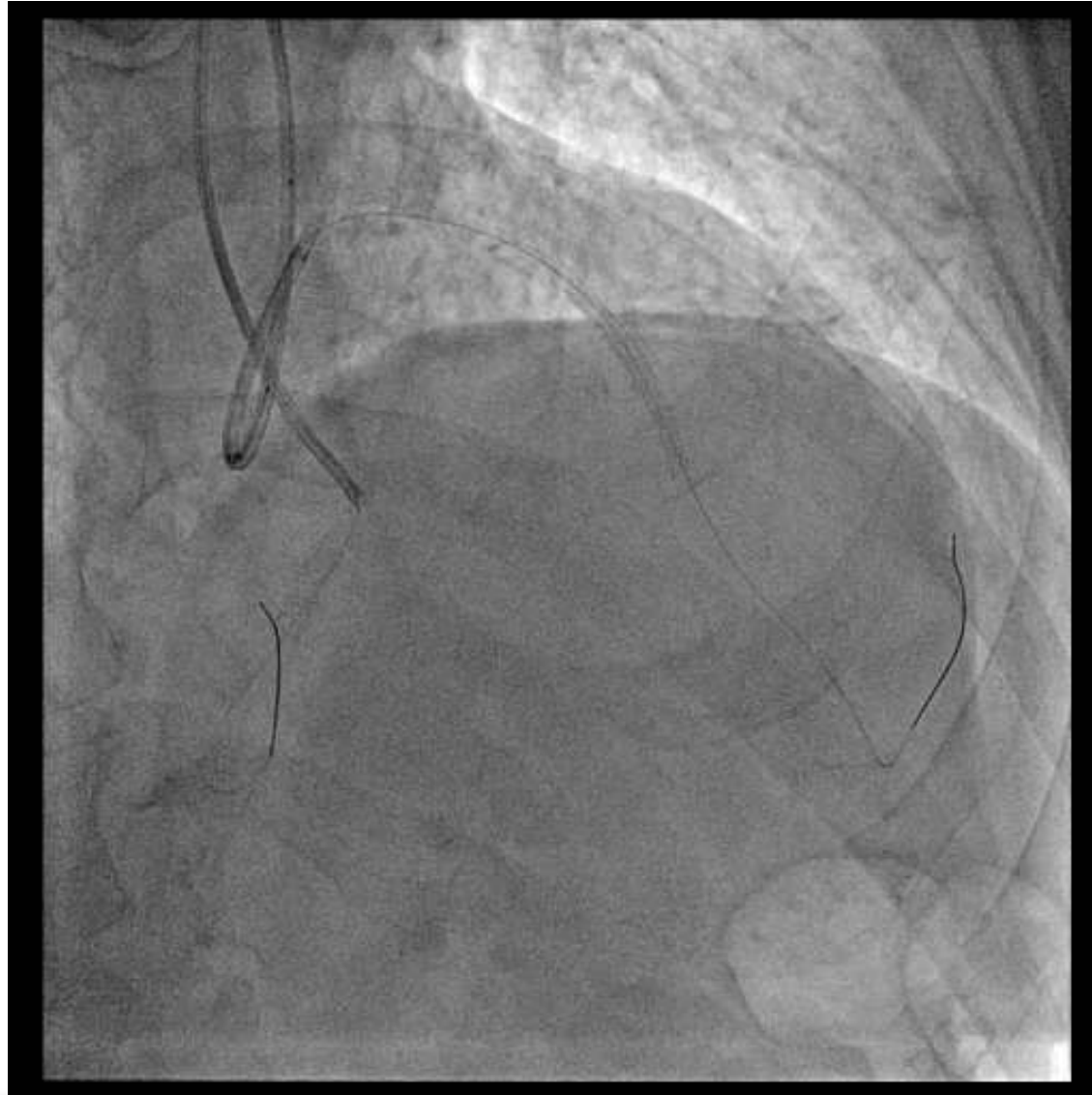




Onyx 2.75X34



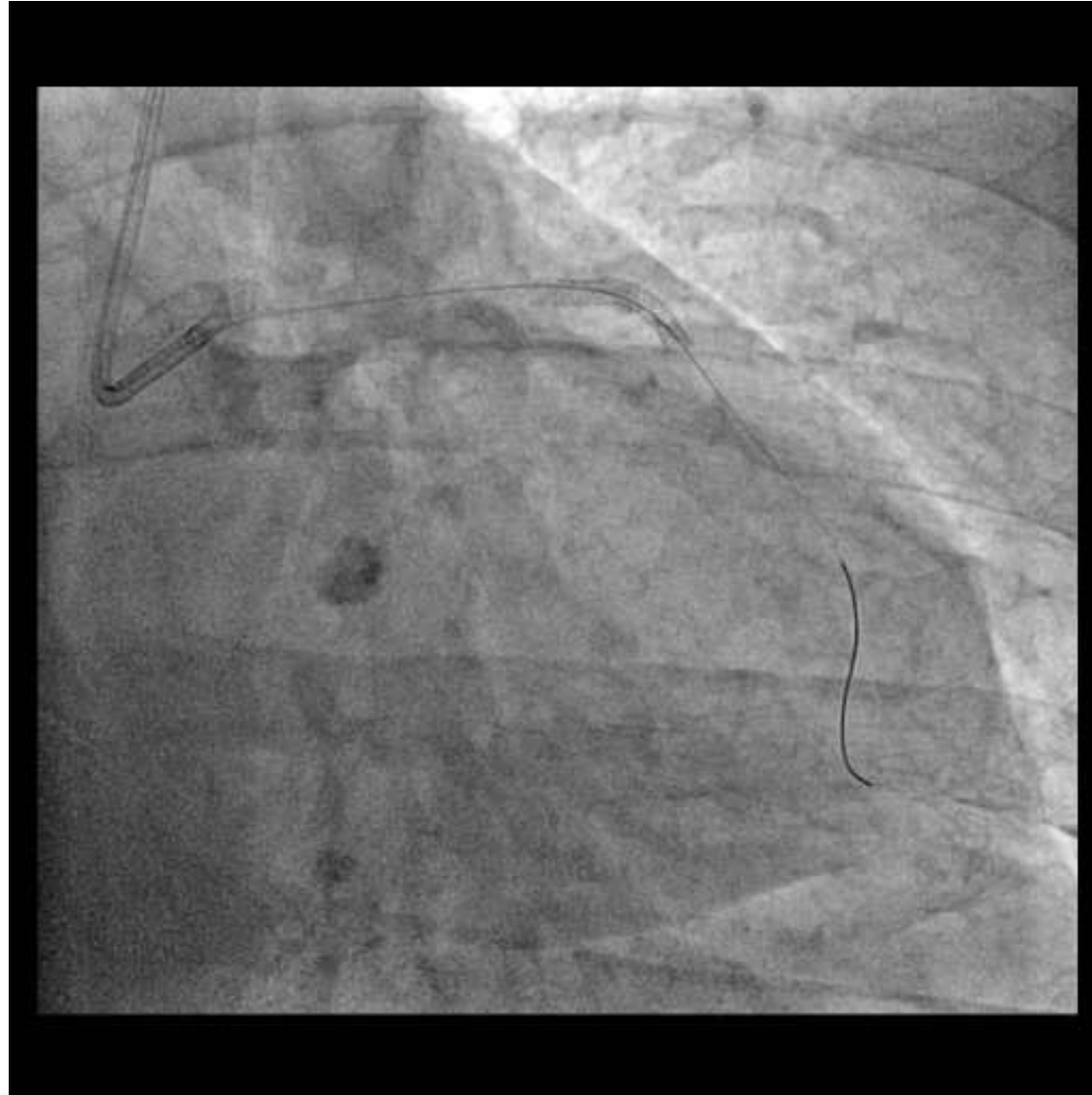
LAD CTO PCI result



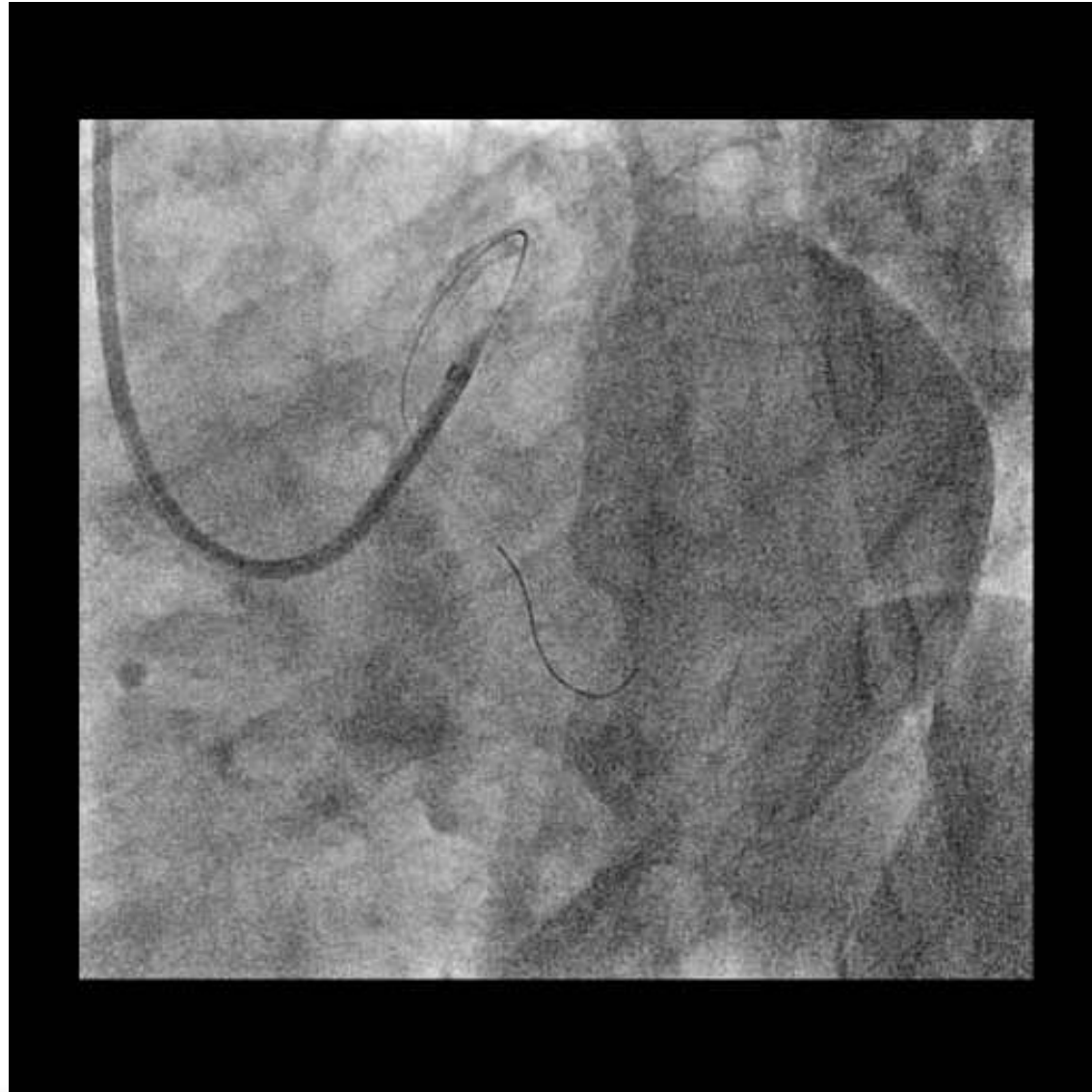
LM PCI

- 1,1,1
- Moderately calcified
- **EBC main study** (: randomized double stenting)
- Technical choice: provisional strategy for double stenting (T/TAP)

LM PCI



LM PCI

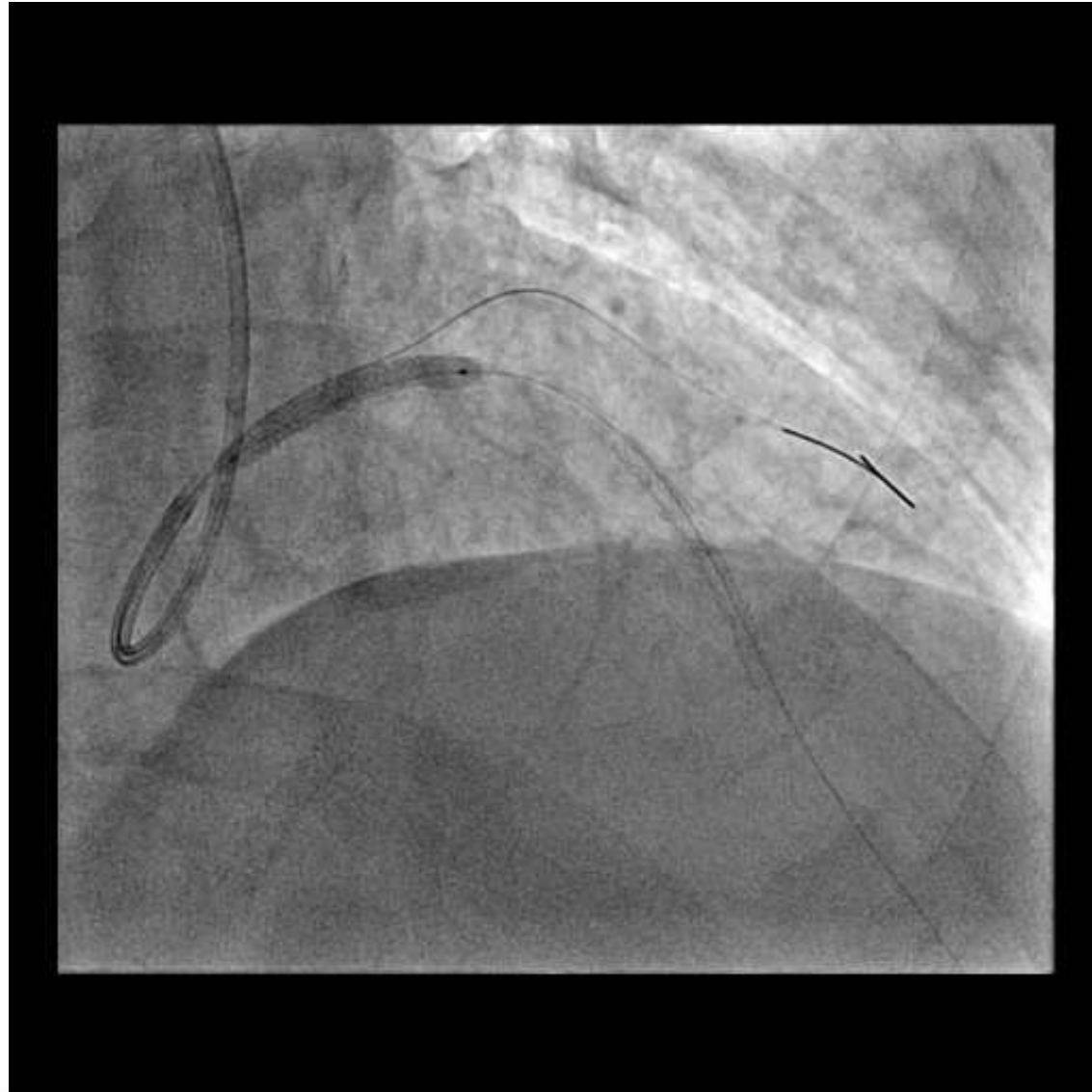


LM to LAD stent measurement

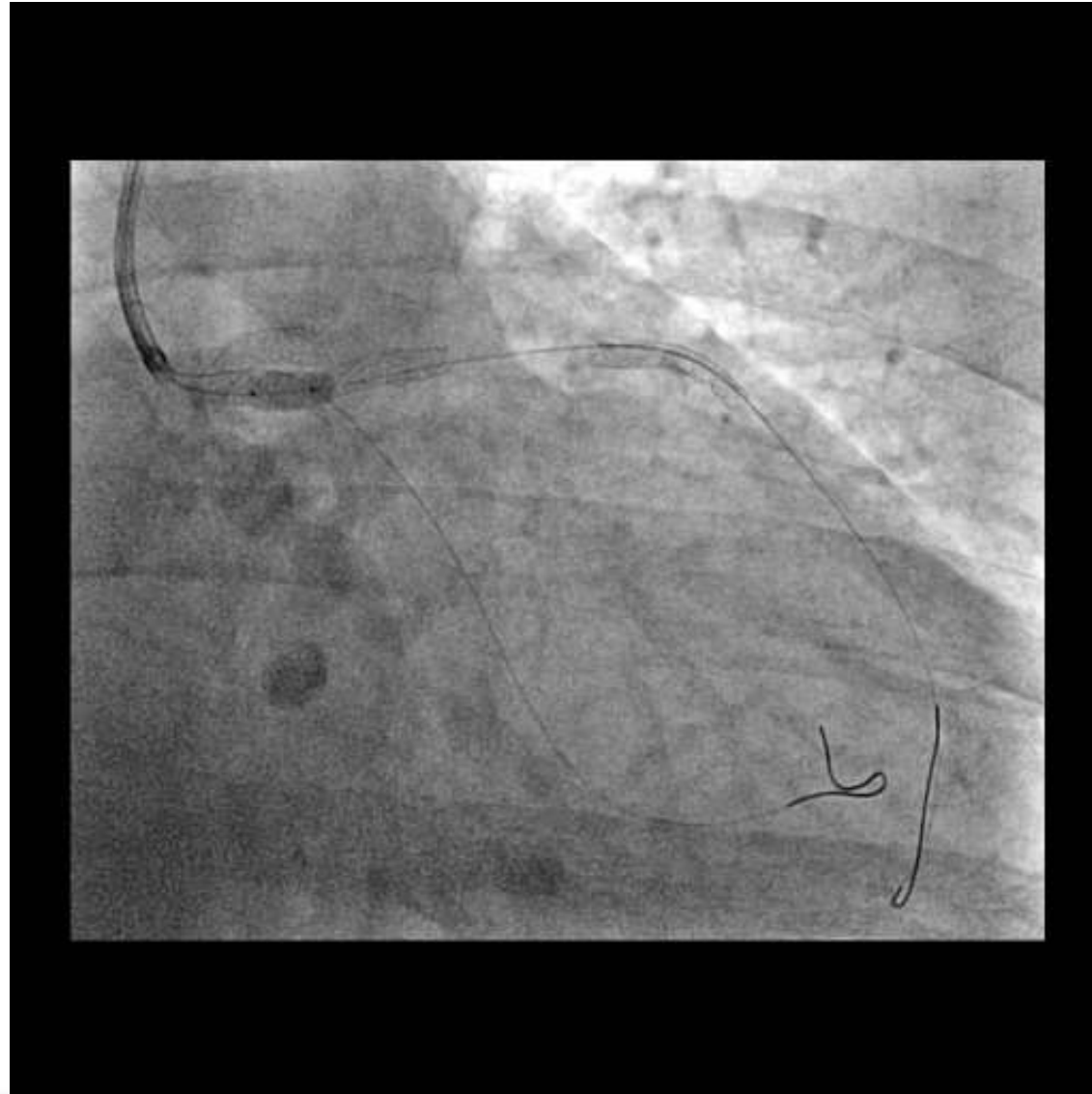
EBU 3.5 7F



2 BMW, Onyx 3.5X26



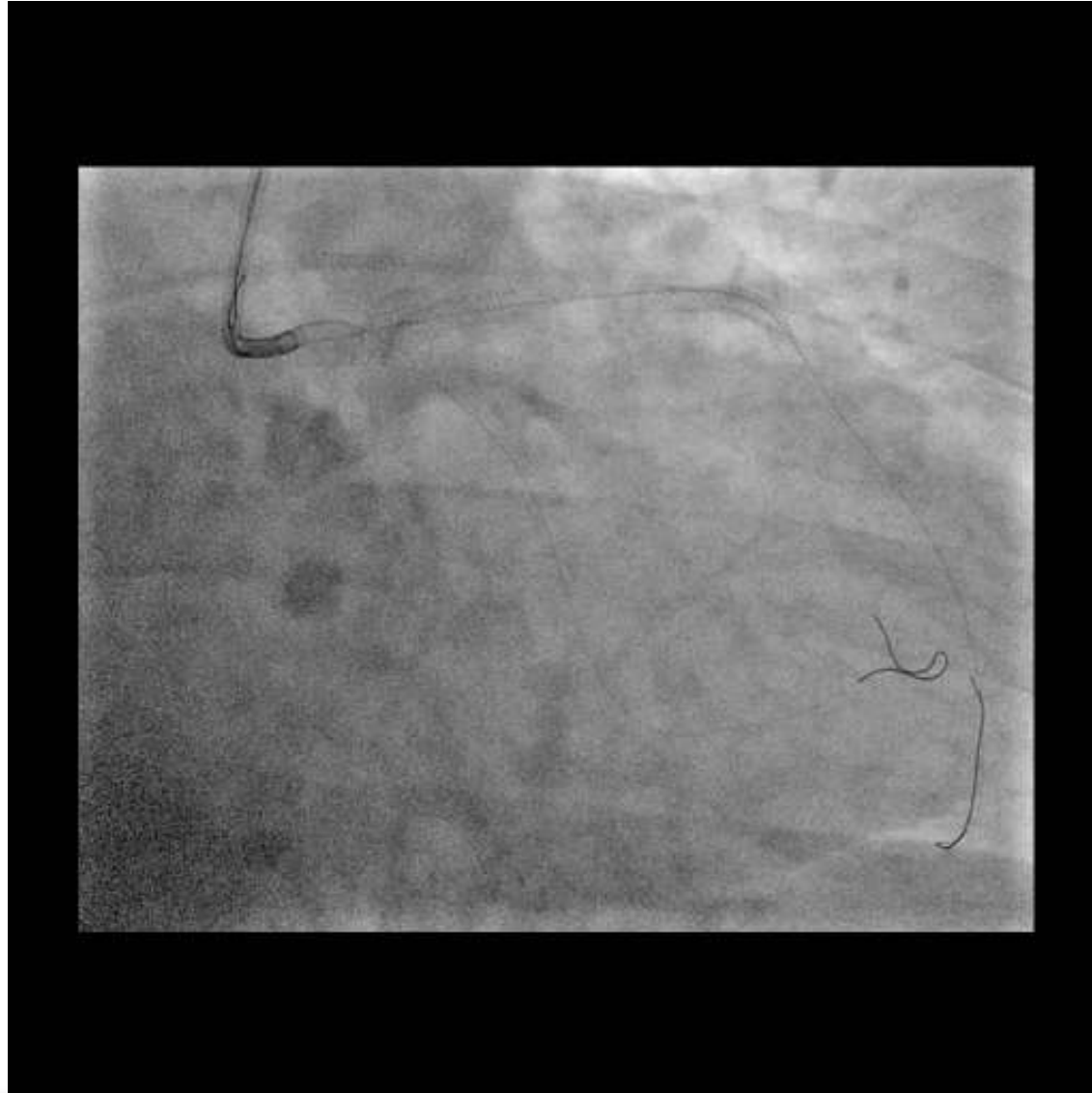
Trek 4X12



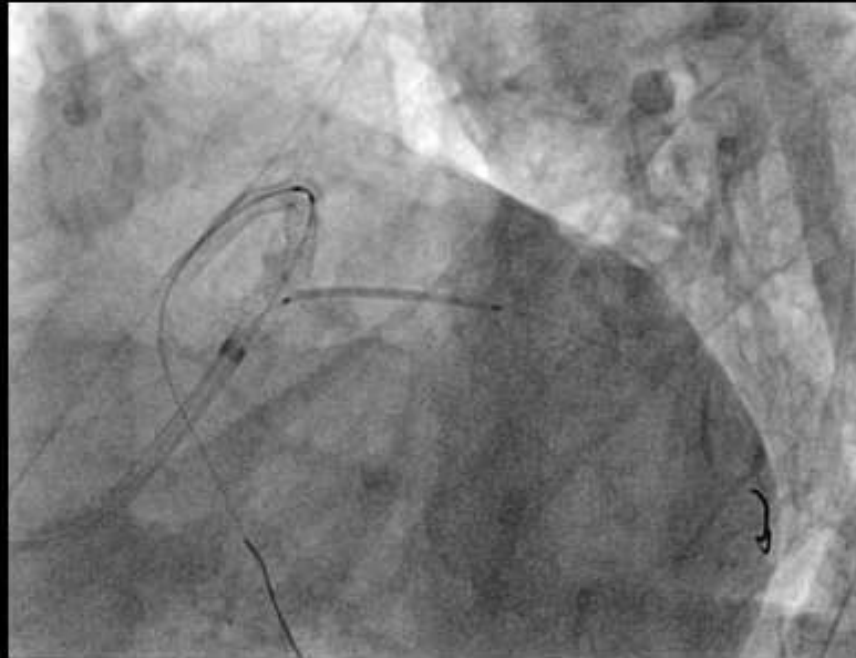
Post cross-over stenting



3rd wire: BMW



Resolute Onyx 3X22



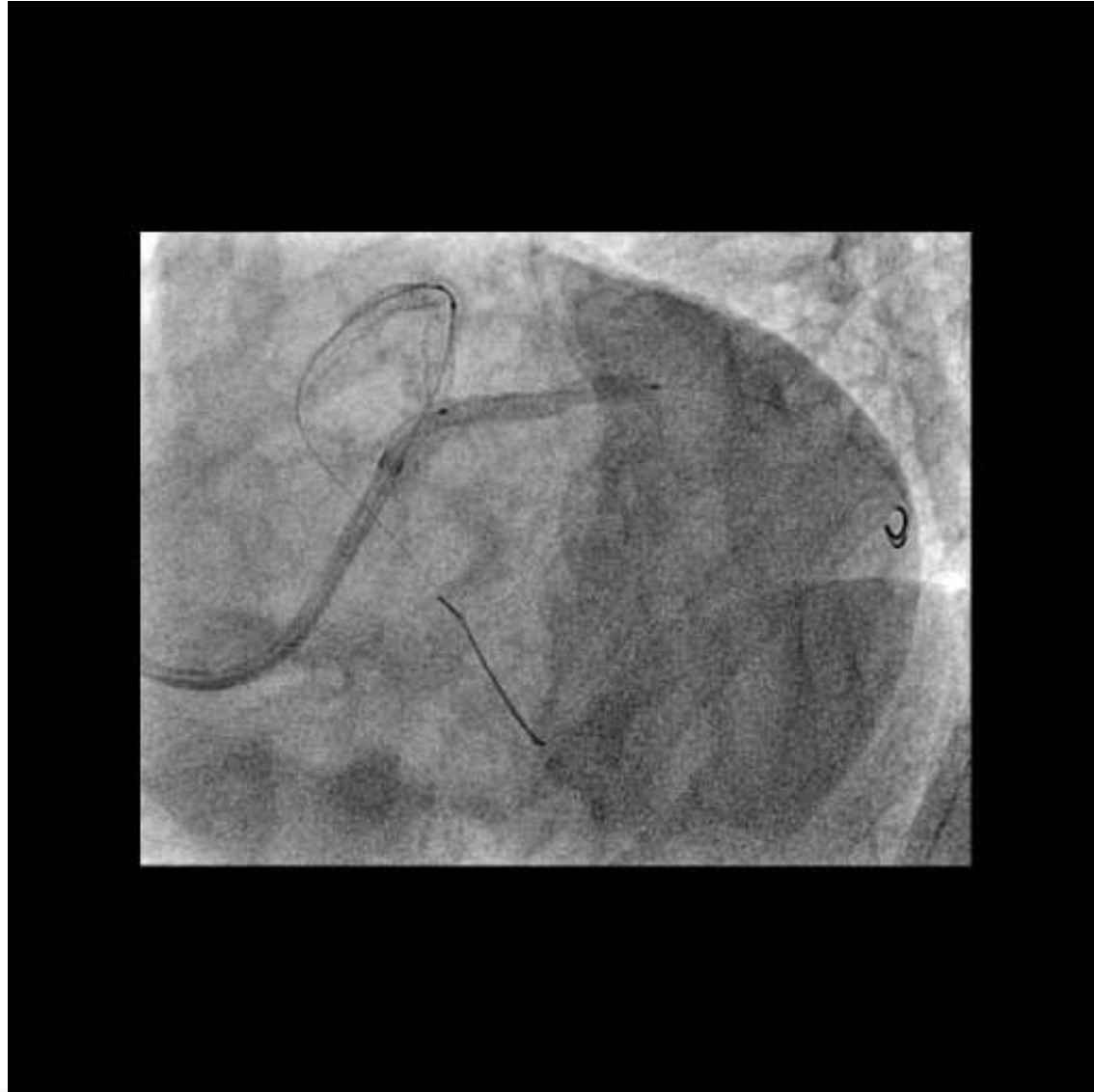
Resolute Onyx 3X22



Resolute Onyx 3X22



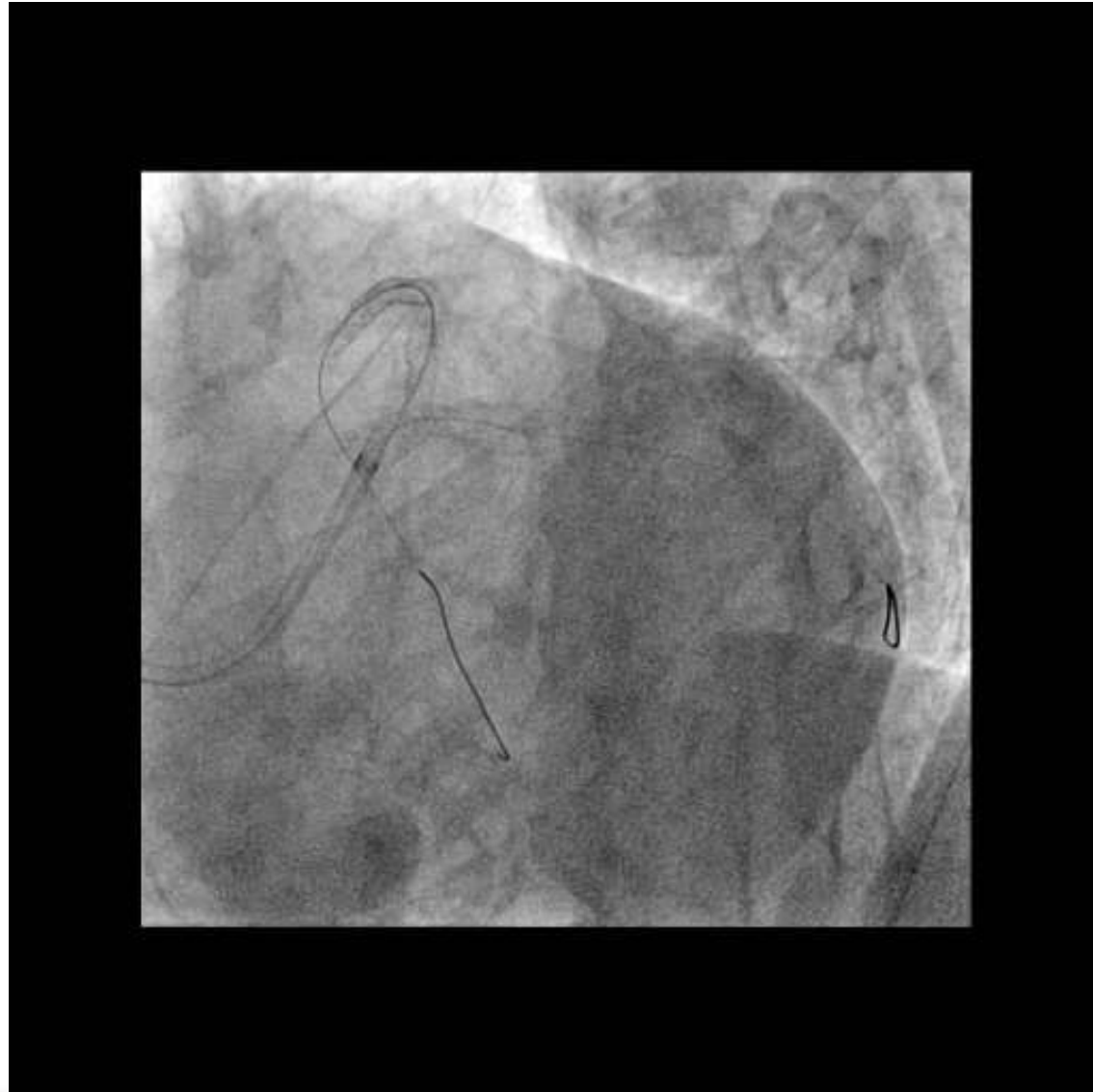
Resolute Onyx 3X22



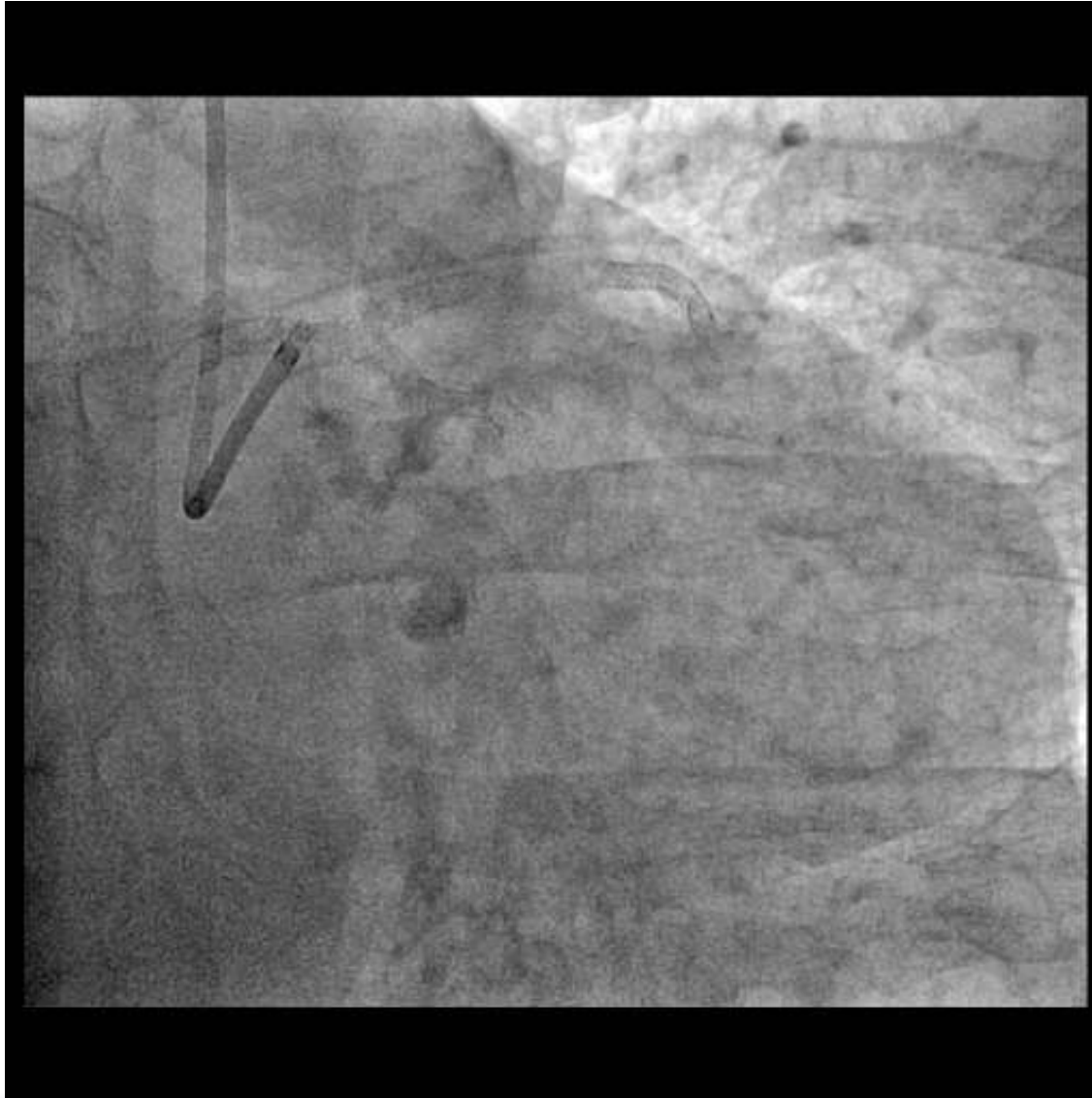
Kissing 3.5X3.5



Final result



Final result



My last PCI

